



DEFENCE ESTATES

Delivering Estate Solutions to Defence Needs

Info for Mariners

THE LULWORTH RANGES
INFORMATION FOR
MARINERS
2009



RANGE CONTROL

Armoured Fighting Vehicles Gunnery School

Lulworth Camp

Wareham

Dorset

BH20 5QF





1. Army units are trained in gunnery on the Lulworth Ranges.

Much of the training involves shooting on the Lulworth Ranges and during firing periods it helps us **if mariners please for their own safety avoid our sea danger areas**, which extends some 6 nautical miles south of Lulworth Cove, and keep at least 1 + miles clear of the target buoys on St.Albans ledge. Valuable training time can be lost when vessels stray into the range; delays are frustrating and expensive, so we welcome your co-operation. Full details of the sea danger areas are available in yacht clubs. A map is reproduced on the back page for your convenience.

2. Daylight Firing. Normal firing times are: All Local Times:

Monday to Thursday	0930	-	1700 hrs
Friday	0930	-	1230 hrs
Friday firing weekends only	0930	-	1700 hrs

3. Night Firing. Although Tuesdays and Thursdays are usually chosen for night firing, sometimes other days are selected. Firing begins as soon as it is dark and lasts for about 3-4hours. The timing obviously varies with the season of the year.

4. Weekend Firing. Territorial Army training is annual and firing takes place at weekends, but this only occurs a maximum of 6 times a year and is programmed well in advance. For 2009 a total of 6 weekends have been reserved for firing and these are:

24 Jan 09	to	25 Jan 09
14 Mar 09	to	15 Mar 09
04 Apr 09	to	05 Apr 09
18 Jul 09	to	19 Jul 09
03 Oct 09	to	04 Oct 09
14 Nov 09	to	15 Nov 09

5. Exact details of the firing programmes, including any changes to the forecasts given in the paragraphs above, are sent monthly in advance to all the main yacht clubs in the area.

6. Firing times are broadcast on Radio Solent (300m, 221m, 96.1 MHz and 103.8 MHz) during the shipping and weather news at about 0645 and 0745 hours on weekdays.





7. Non Firing Periods. There will be no Army firing within the DO 26 inner area and no sea danger areas will be operated during the periods below (all dates inclusive):

Easter	10 Apr 2009	-	19 Apr 2009
Bank Holiday	02 May 2009	-	04 May 2009
Spring	23 May 2009	-	31 May 2009
Summer	25 Jul 2009	-	31 Aug 2009
Christmas / New Year	19 Dec 2009	-	03 Jan 2010

8. Danger Signals. Red flags are flown, and red flashing lights are displayed from the flag-staffs on Bindon Hill and St. Albans Head **ONLY WHEN ARMY FIRING IS TAKING PLACE.** However, further ashore, mariners may notice some red flags which fly whether or not firing is taking place, these mark the range boundary.

9. Range Boats. During firing, range safety boats are on station (in all practicable weather conditions) at the outer extremities of the danger area.

10. Radio. The Army Range Control listen on Channel 8 and range boats listen on VHF Channel 8 and 16 when firing is in progress.

11. Bylaws. Copies of the Bylaws affecting the Lulworth Ranges are available for inspection at a number of places, the most convenient being the Coastguard Station HQ, Weymouth, or the Weymouth Harbour Office.

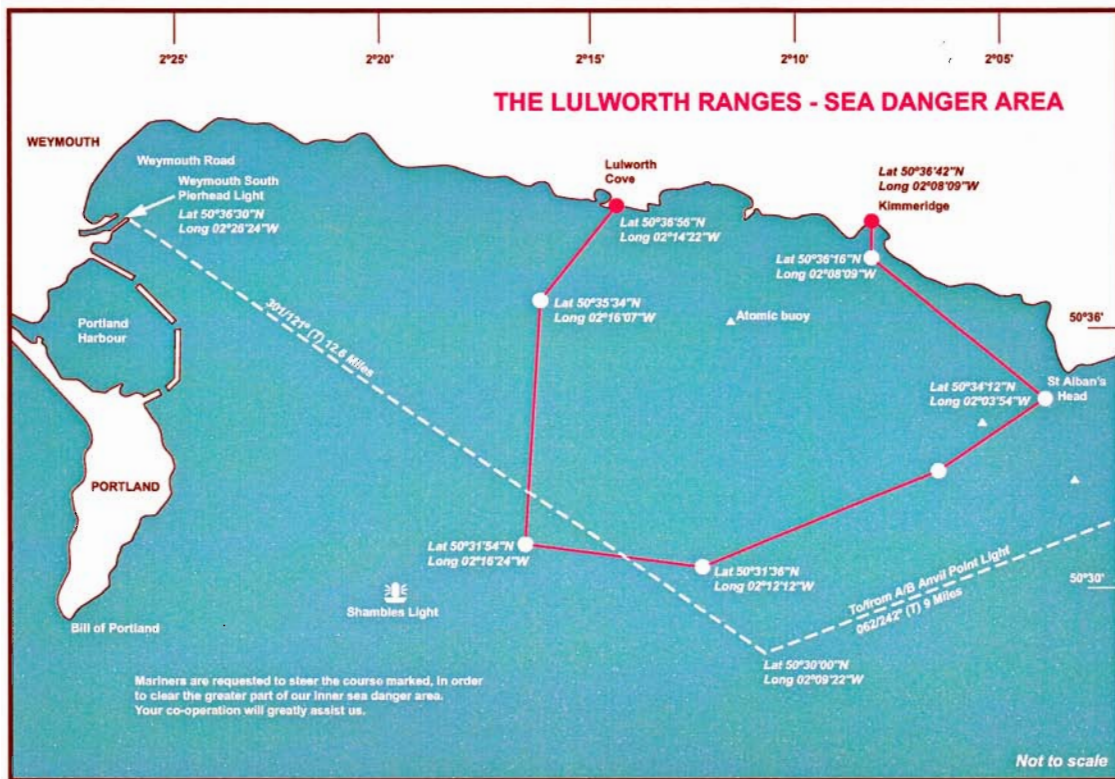
12. For further information, please contact :

**01929 - 404712 Working Hours or
01929 - 404819 for current range information**

or speak to the Range Safety Boats Direct. They will be able to give you a safe course of passage outside the Live Firing Sea Danger area. Their call sign is - **“Lulworth Range Safety Boat”**.



Dafe for Mariners



Datum - OSGB 36



Designed and printed by
MEDIA SUPPORT WING
 HQ Armour Centre, Allenby Barracks, Bovington BH120 6JA
 mediasupportwing@bbcconnect.com
 mswwgraphics@armourcentre.mod.uk
 09_7863-InformationForMariners.indd