



Inland Waterways Instructor Conference 2018

Rachel Andrews, Chief Instructor Power Schemes

Staff Introductions

Emma Muddiman, Power Schemes Administrator

Cloe Andrews, Recognition Administrator

Gareth Brookes, Regional Development Officer (Midlands)

Craig Burton, Training Resources Manager

Steen Ingerslev, Publications Manager

Kate Fortnam, Campaign Manager, The GreenBlue

Conor Lee-Swift, Membership Development Manager

obrigado

Dank U

Merci

mahalo

Köszí

спасибо

Grazie

Thank
you

mauruuru

Takk

Gracias

Dziękuję

Děkuju

danke

Kiitos

RYA Inland Waterways Scheme

- % of qualified instructors here today: 20%
- RTCs represented today: 40+%
- Number of Recognised Training Centres: 48
- 2 RTCs in France and the Netherlands



RYA Inland Waterways Scheme

Helmsman

- 2-day course
- 1-day direct assessment, no teaching
- 1 instructor to 3 students
- Minimum age 12

Crew

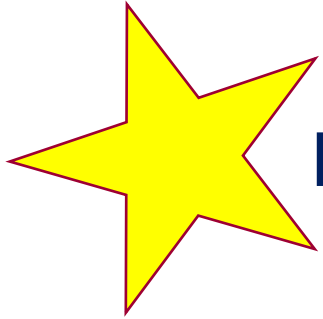
- Can be taught alongside the Helmsman course
- Minimum age 8

STATS

- IW Helmsman Certificate 1250+ (2017), up 3.5%
- IW Crew Course 130+ (2017), down 13%
 - Sold in packs of 10, so possibly centres still have stock
 - Consider how to engage with families

Numbers are based on sales and can depend upon how much stock is held at RTCs

Central Certification Registration



Best RYA scheme at registering 79% - well done!

- Records now only 90 days from course date
- Register straight away, even if awaiting a photo
- Replacements only through RYA

Other courses your RTC could offer



SHOREBASED COURSES

Start your training with a course appropriate to your experience – you don't have to start at the beginning.
Our recommended path through the courses is shown below.

Navigation Courses Ashore/Online

Essential
Navigation
& Seamanship



Day
Skipper



Coastal Skipper/
Yachtmaster™
Offshore



Yachtmaster™
Ocean



Specialist Courses Ashore/Online

Basic Sea
Survival



Diesel
Engine



Maritime
Radio
Short Range
Certificate



Offshore
Safety



First
Aid



Radar



Professional
Practices
and
Responsibilities



CEVNI
Test



Safe
and Fun



KEY



Recommended progression.

RYA training is
also available for:



www.rya.org.uk





Contact us: 02380 60 4181 training@rya.org.uk



Training Notices & Guidance

[See all notices | guidance](#)

TG28-18 – New style of RYA Instructor Certificates.

TN23-18 – Changes to the Recognition Guidance Notes in relation to data protection.

TG27-18 – Changes to the Recognition Guidance Notes in relation to GDPR.

TN22-18 – Online payments for Marine Radio SRC exams.



Need help signing in?



Certificate Registration



Shop Online

See the latest...



[Customer satisfaction survey](#)

Analysis for the second quarter of 2018



[Recognition Guidance Notes](#)

Updated in relation to data protection



[Wavelength April 2018](#)

The latest info for our training centres, coaches and instructors

Thinking of running an RYA training centre?



Learn how to get started



Jobs

Training Centres looking for people

People looking for work

Document Finder

Are you looking for a specific form, notice or document?

If you know what you're looking for you can go straight to our document

RYA Training Support Site

Search Training Support...

Contact us: 02380 60 4181 training@rya.org.uk



Training Support
↑

About RYA
Training

About RYA
recognition
RGN:A

Managing
your centre
RGN:B

Practical
centres
RGN:C

Shorebased
centres
RGN:D

Latest Info &
Updates

Business
development

Qualifications

Register Sign in

Search Training Support...

Contact us: 02380 60 4181

training@rya.org.uk



Training Notices & Guidance

See all [notices](#) | [guidance](#)

TG28-18 – New style of RYA Instructor Certificates.

TN23-18 – Changes to the Recognition Guidance Notes in relation to data protection.

TG27-18 – Changes to the Recognition Guidance Notes in relation to GDPR.

TN22-18 – Online payments for Marine Radio SRC exams.

Need help signing in?

Certificate Registration

Shop Online

See the latest...

- [Customer satisfaction survey](#)
Analysis for the second quarter of 2018
- [Recognition Guidance Notes](#)
Updated in relation to data protection
- [Wavelength April 2018](#)
The latest info for our training centres, coaches and instructors

Thinking of running an
RYA training centre?



Learn how to get started

Jobs

Training Centres looking for people

People looking for work

Document Finder

Are you looking for a specific form,
notice or document?

If you know what you're looking for
you can go straight to our document
finder.

Document Finder

[clear filters](#)

Search

insp



Document types



Subject area



Training scheme



Showing 8 items out of 297 . You searched for "insp"

Document Type	Document Name	Featured on	Download
Instructions, Guidance	DRAFT Insp Inspector Job description		
Forms	Inspection Action Plan		
Financial, Forms	Inspection claim form - overseas (small boat schemes and superyachts)		
Financial, Forms	Inspection expense claim form - overseas (cruising inspections)		



Training Notices and Guidance

Training Notices & Guidance

See all [notices](#) | [guidance](#)

TG28-18 – New style of RYA Instructor Certificates.

TN23-18 – Changes to the Recognition Guidance Notes in relation to data protection.

TG27-18 – Changes to the Recognition Guidance Notes in relation to GDPR.

TN22-18 – Online payments for Marine Radio SRC exams.

RYA TRAINING NOTICE

Implementation date: 23 May 2018

Reference: TN 23-18



Changes to the Recognition Guidance Notes in relation to data protection

Applies to: All RYA Recognised Training Centres

This Notice details the changes that will be made to the RYA Recognition Guidance Notes (RGNs) in preparation for the introduction of the General Data Protection Regulations (GDPR) coming into force on 25 May 2018.

The following Notice shows the intended revised text. The definitive final version will go live on 23 May on www.rya.org.uk/training-support, allowing time for comparisons between old and new RGNs to be made by those implementing the changes at their centre. Prior to that date we recommend you compare the changes below with the existing RGNs on the Training Support Site to assess the changes you may need to make.

Also, on or around the same date, the RYA's Privacy Policy will be updated.

New sections in the RGNs:

A3.5 Contact with Principals and Chief Instructors

In general, the RYA will make contact with the Principal and/or Chief Instructor using the contact details provided on the Application for Recognition form (AR1).

In exceptional circumstances, such as in relation to a serious incident, the RYA may use any other details available, including personal addresses, email addresses or phone numbers in order to make contact.

B15 Data protection

When dealing with personal data at your centre you should consider the six principles of data protection law in all aspects of your operation:

1. Lawfully, fairly and transparently

RYA Inspections

New IR1

Principal: maintain standards of recognition

Chief Instructor: day-to-day responsibility for standards of training; equipment maintenance and wellbeing of the students/instructors

- 'Remote' Chief Instructors not accepted
- Must be hands-on part of the RTC

RYA Centre Inspection Report

Royal Yachting Association
RYA House, Emsay Way, Henley,
Southampton SO31 4YA, UK
Tel: +44 (0)23 8060 4181
email: training@rya.org.uk

Centres should complete all shaded sections prior to inspection. Please use the Recognition Guidance Notes and Training Checklists in conjunction with this report. Items requiring attention will be listed on an Action Plan.

For completion by the centre:

Centre name _____ Region _____ COASTAL / INLAND

Primary operating base address _____

Postcode _____ Country _____ Tel _____

Additional operating sites:

Secondary waterbase _____ Inspected: YES / NO

Tertiary waterbase _____ Inspected: YES / NO

Principal's name _____

Primary contact details (if this is not the Principal, the Principal must be kept informed of all recognition matters)

Name _____ Position at centre _____

Address _____

Tel _____ Email _____

I certify that this centre holds, and will continue to maintain in full force and effect: A valid insurance policy (or policies) providing adequate Third Party Liability cover in respect of liabilities arising from its RYA activities afloat and ashore; Other insurance(s) as appropriate to fulfil its legal obligations; Ownership or charter arrangements for each vessel/equipment used for RYA activities and take full responsibility for their safe operations.

I confirm that the above named centre accepts the conditions of recognition laid out by the RYA in the Recognition Guidance Notes (as amended by Training Notices), equipment specified in Training Checklists and syllabi laid out in logbooks and handbooks. I confirm I have authority to make this declaration on behalf of the centre named above and that continued recognition is conditional upon timely completion of any actions resulting from the centre inspection.

Signed (Principal) _____ Name _____ Date _____

For completion by the inspector:

I recommend the centre is recognised to offer the course(s) circled below, subject to compliance with the action plan and approval by the RYA.

Dinghy (NSS)	Level 1 2 3	Sea	Spin	Race	Day	Perf	Powerboat	Level 1 2	Safety	PTO	Int	Adv
Keelboat (NSS)	Level 1 2 3	Sea	Spin	Race	Day	Perf	Personal Watercraft	PW Prof	PW Safety			
Multihull (NSS)	Level 1 2 3	Sea	Spin	Race	Day	Perf	Inland Waterways	IWCC	IWHC			
Dinghy (YSS)	Stage 1 2 3 4	Sea	Spin	Race	Day	Perf	Sail Cruising	SS1 SS2	SY CC	WL DS	CS	
Windsurfing	Start IntNP	IntP	Adv	AdvP			Motor Cruising	SMC	HC DS	AP CS		
Windsurfing (Youth)	Stage 1 2 3 4						SRC	Yes / No	(form IR-SRC enclosed)			
Windsurfing (Racing)	Start Int	Adv										

The following sites have been inspected _____

I have inspected the centre and checked the items listed in this report form and the Principal/Chief Instructor understands his/her responsibility to comply with the RYA's conditions of recognition.

Signed (inspector) _____ Name _____ Date _____ RYA Vendor No _____

Once completed please return this form, the action plan and associated papers to RYA HQ or your Regional Development Officer.

For RYA Use only:

Insp	Pd	£	Staff checked	CI checked	RDO checked	Database update
------	----	---	---------------	------------	-------------	-----------------

Lifejackets or Buoyancy Aids

Must be worn during training

- when moving between the vessel and the bank
- during locking operations

Must be serviced in line with manufacturers recommendations (usually annually), certificates required

Visually check for signs of damage to the bladder cover, webbing straps, stitching and clips and buckles



This is to certify that the holder has been examined to the
standards laid down by the RYA

Inland Waterways Helmsman Instructor

Mrs R Andrews
C/O RYA House
Ensign Way
Hamble
Southampton
Hampshire SO31 4YA

RYA Ref No.: 009022381

Date of Expiry: 10/04/19




On behalf of the RYA



Signature of Holder



Joining Point – commission

Every quarter we pay commission for the RYA members recruited through Joining Points on the following basis:

- £10.00 for each new Family Membership
- £7.50 for each new Adult Member
- £5.00 for each new Under 25 Member
- £2.50 for each new Under 18 Member

Contact the RYA Membership Department



RYA Volunteer Awards 2019

Rewarding and recognising the volunteers who contribute so much to boating in the UK.

Nominations **via RYA website** from any organisation

Deadline for nominations – **early April 2019**

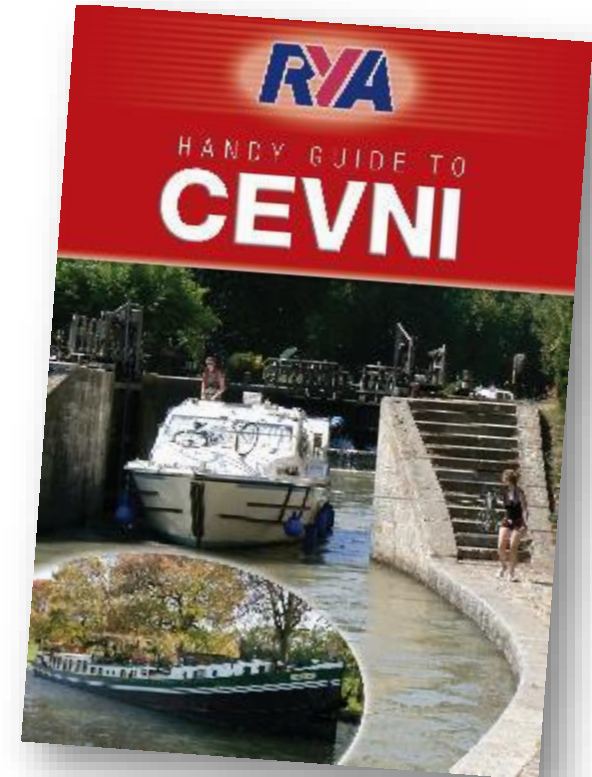
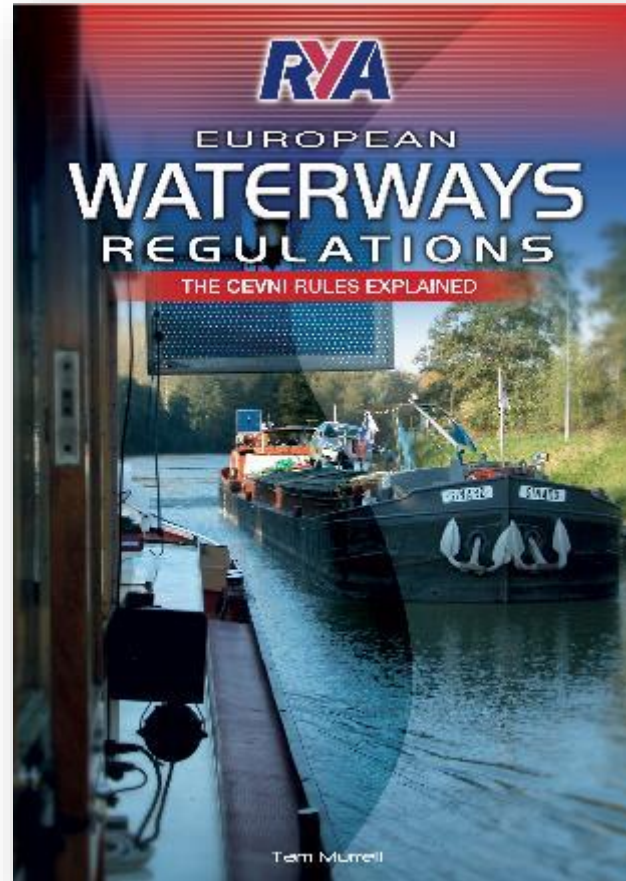
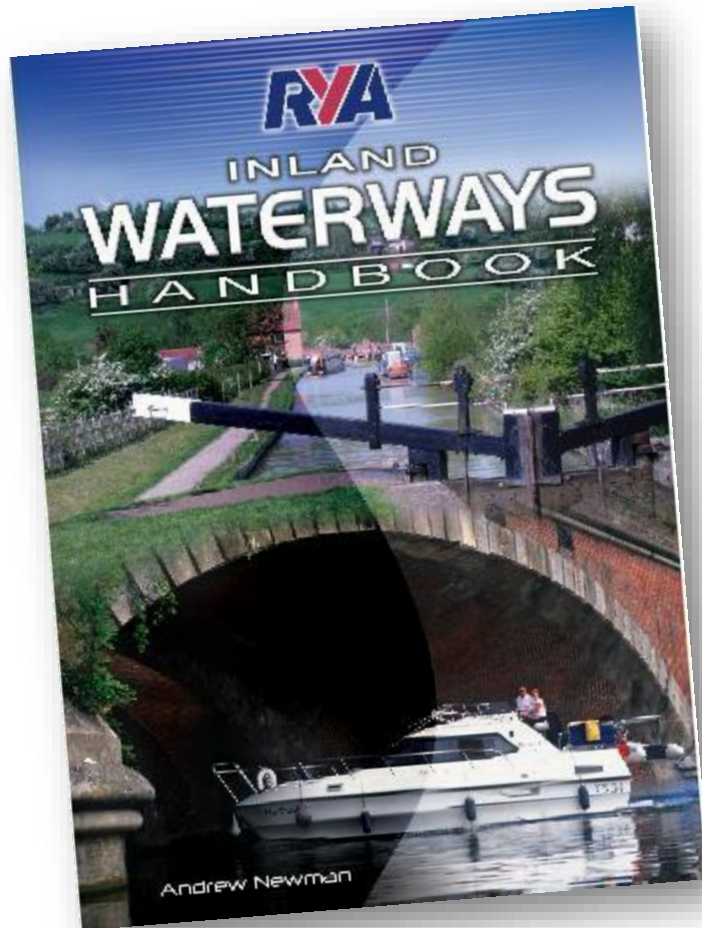
Queries to: volunteering@rya.org.uk



RYA Publications Update 2018

Steen Ingerslev
Publications Manager

Key Books



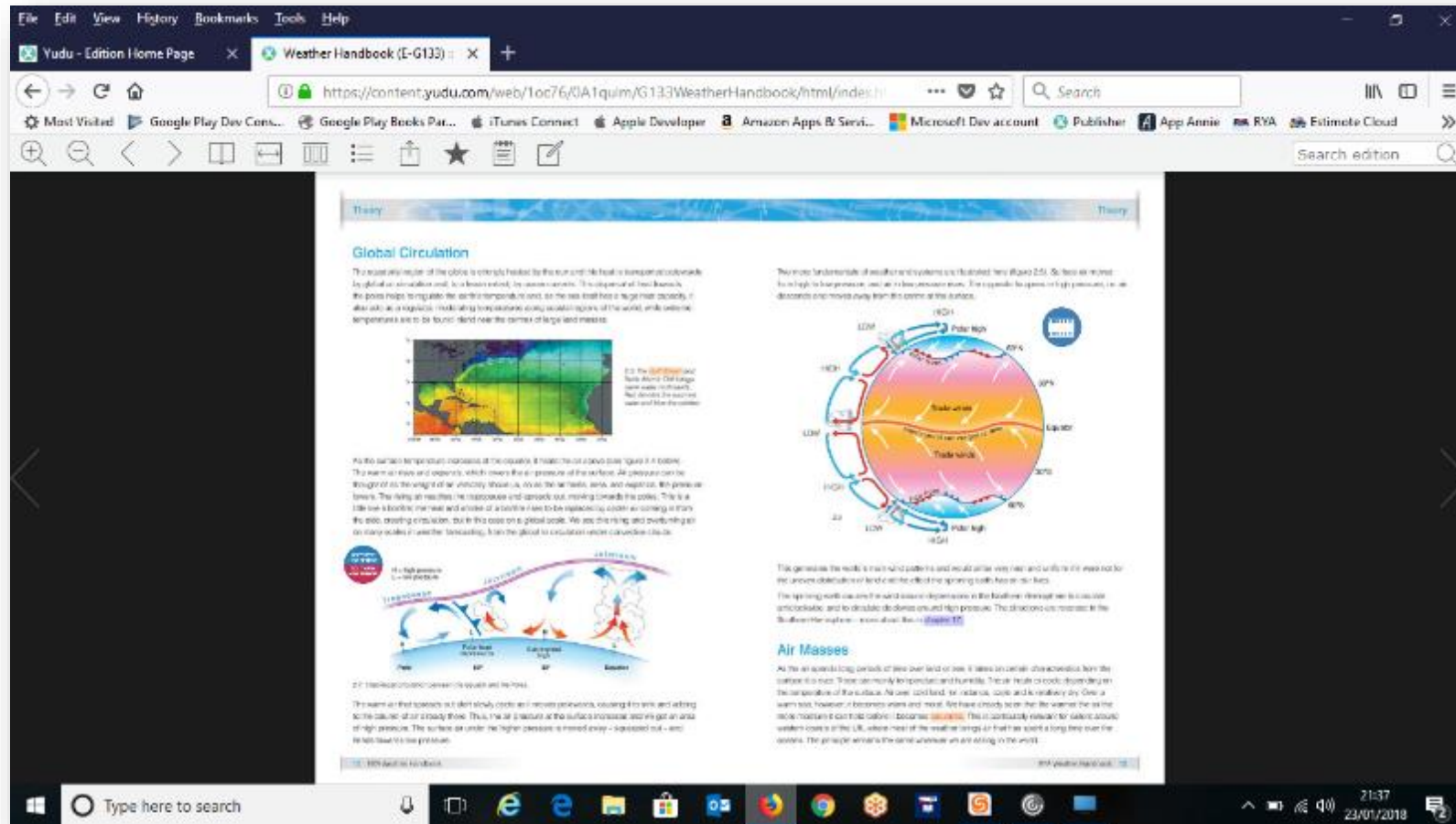
eBooks 2018



www.rya.org.uk/go/app



Online Access



Link on product page of shop
www.rya.org.uk/shop

eSubscriptions



The screenshot shows the RYA website's 'Annual Subscription Prices' page. The page lists six subscription packages with their respective order codes and prices. Below the table, there is a list of eBooks included in each package, each with a plus sign icon. At the bottom, there is a note about the trial nature of the subscriptions and a link to 'Not All eBooks'.

Package	Order Code	Price
Yachtmaster Scheme Subscription	LS-Y	£36.00
Specialist Courses Subscription	LS-S	£20.00
Power Scheme Subscription	LS-P	£30.00
Dinghy Scheme Subscription	LS-D	£13.00
Windsurfing Scheme Subscription	LS-W	£8.00
All Courses Subscription	LS-A	£100.00

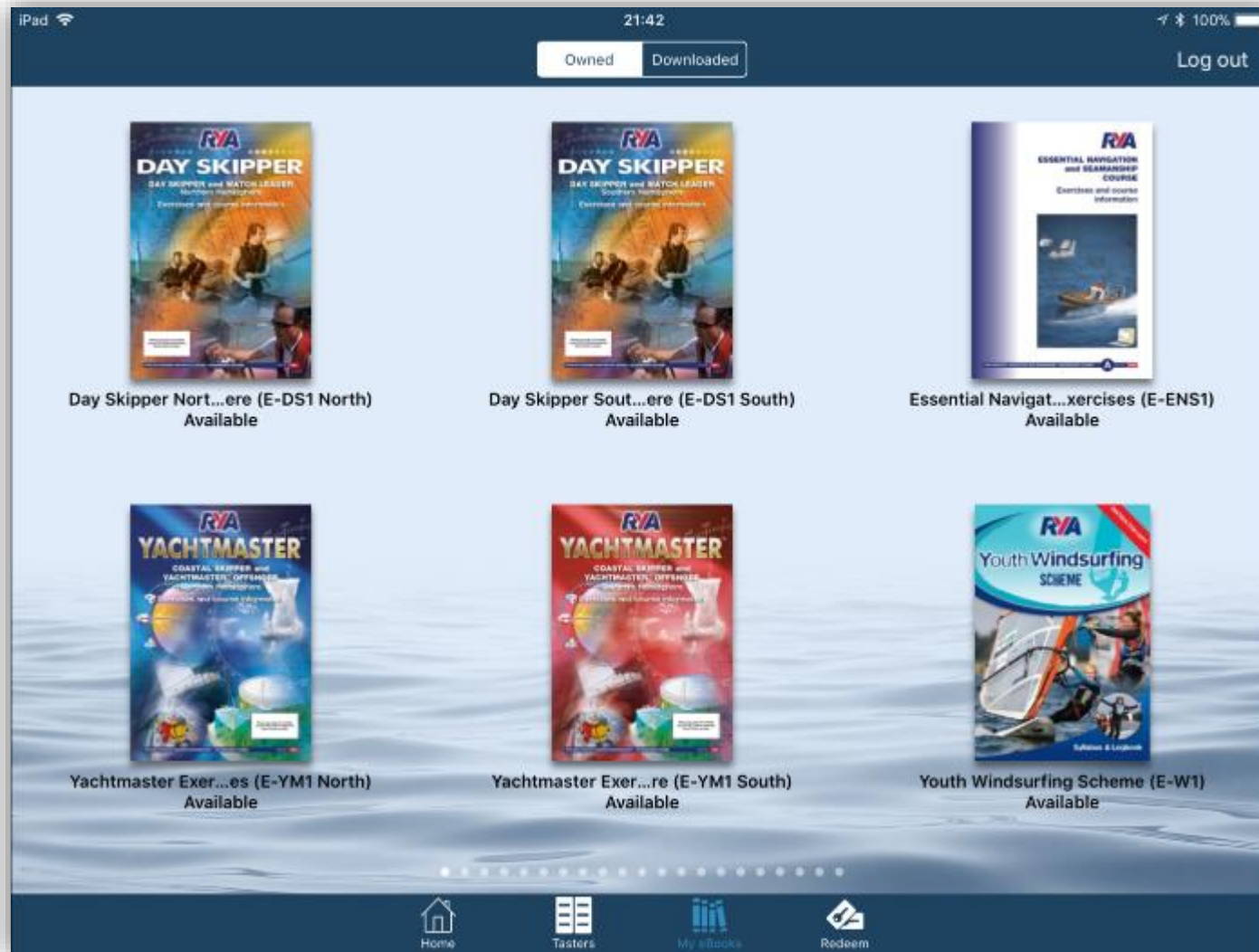
Yachtmaster Scheme Subscription - 29 eBooks	+
Specialist Courses Subscription - 12 eBooks	+
Power Scheme Subscription - 18 eBooks	+
Dinghy Scheme Subscription - 8 eBooks	+
Windsurfing Scheme Subscription - 5 eBooks	+
All Courses Subscription - 56 eBooks	+

There is no need to register for this trial* we are simply running subscriptions as a trial initiative to gauge popularity before investing in development to fully digitise it. We will be running this trial until September 2018 at the very least.

[Not All eBooks](#)

Information and order form at:
www.rya.org.uk/go/subscriptions

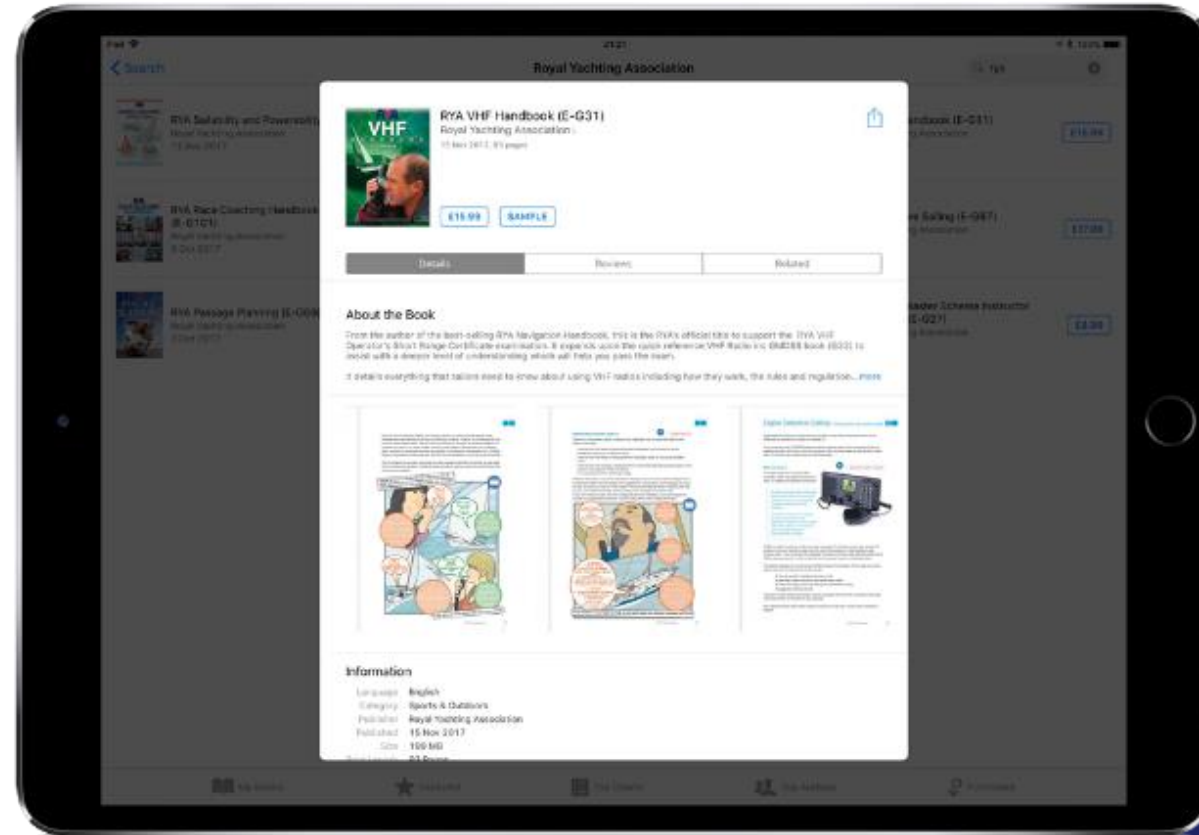
Instructor Only Content



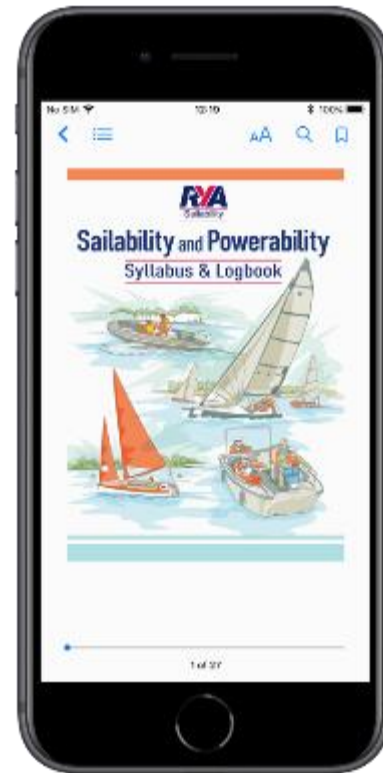
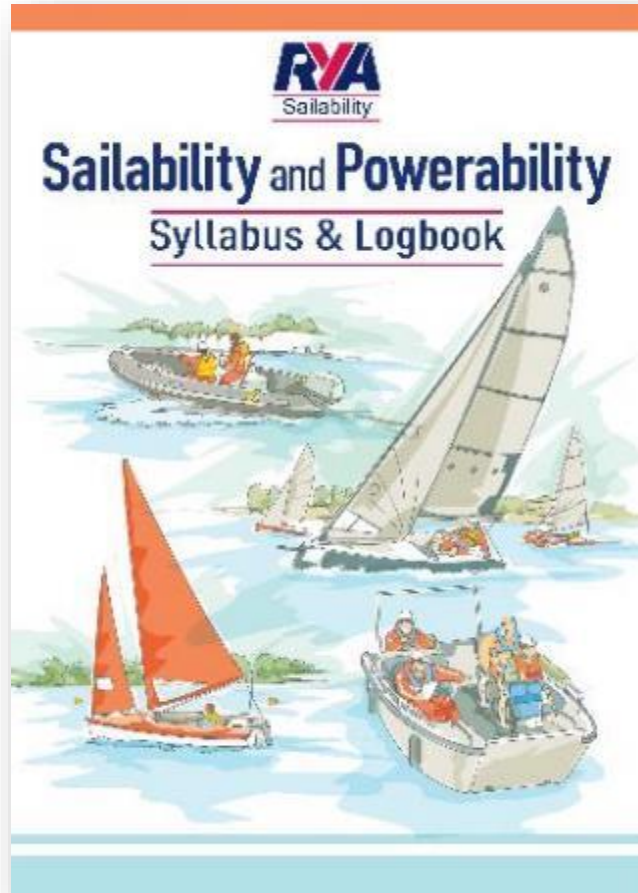
eSubscriptions

www.rya.org.uk/go/subscriptions

iBooks & Google Play Books



Accessibility



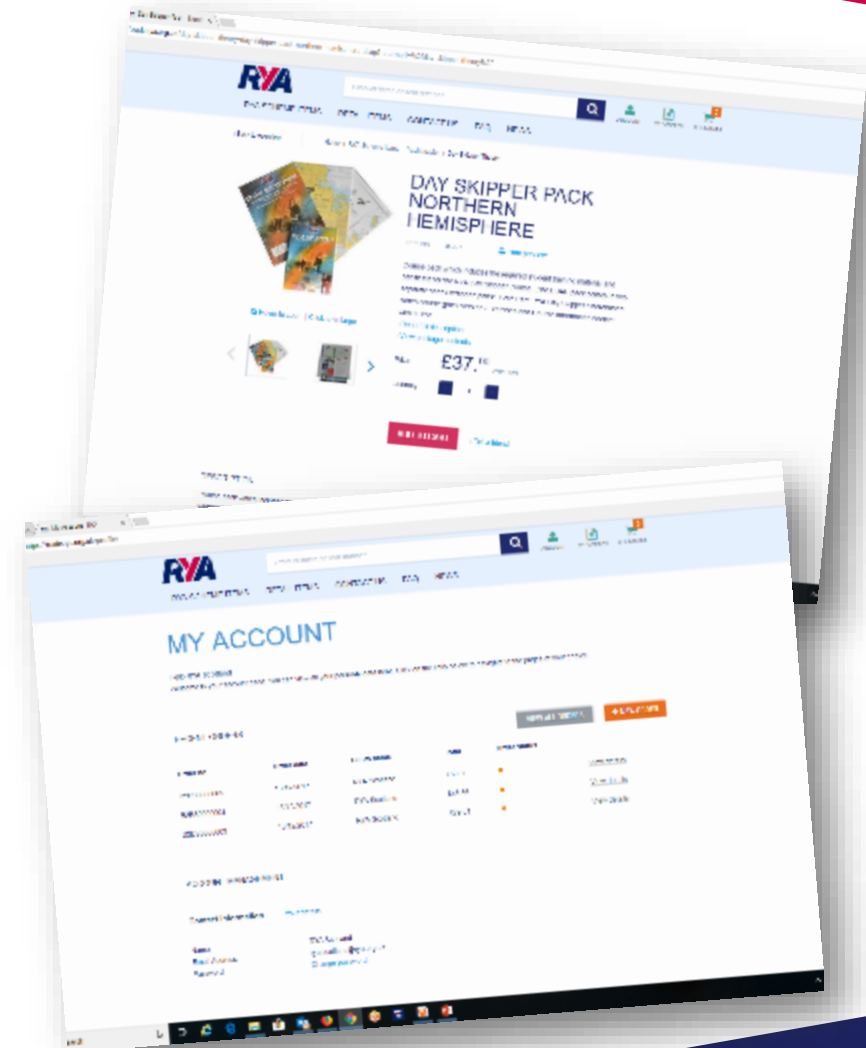
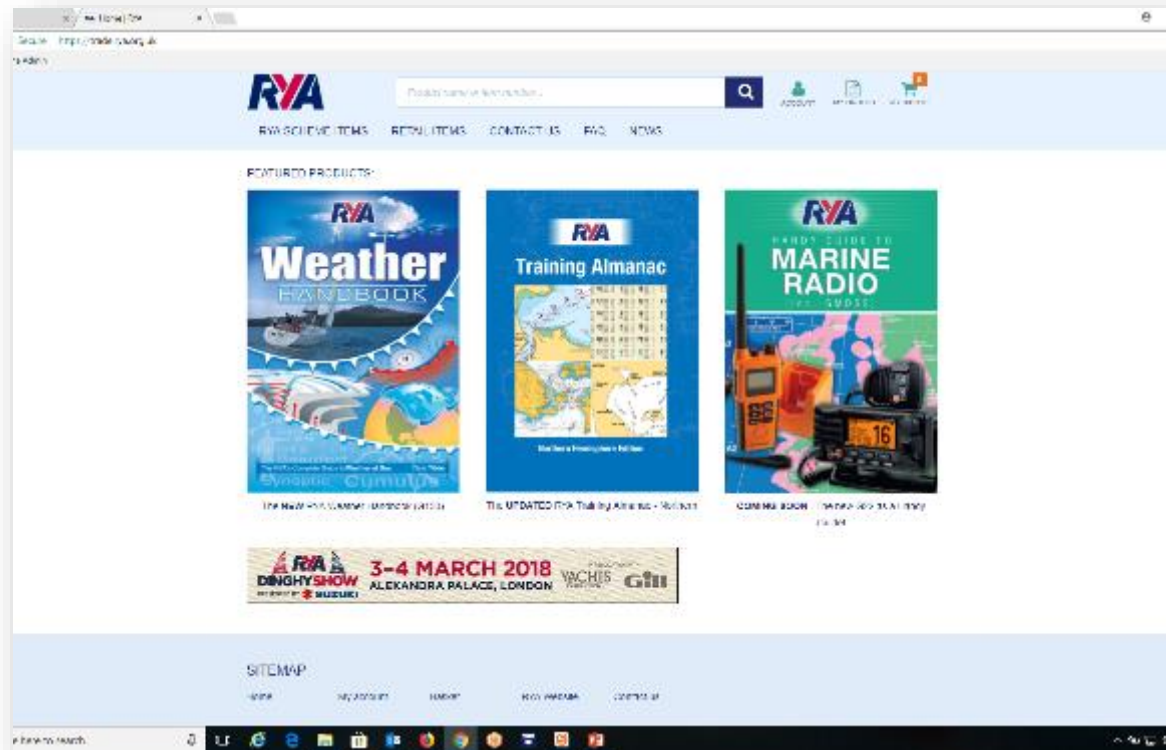
www.rya.org.uk/go/accessiblebooks

Eco-Friendly Approach



www.rya.org.uk/go/ecofriendlyprinting

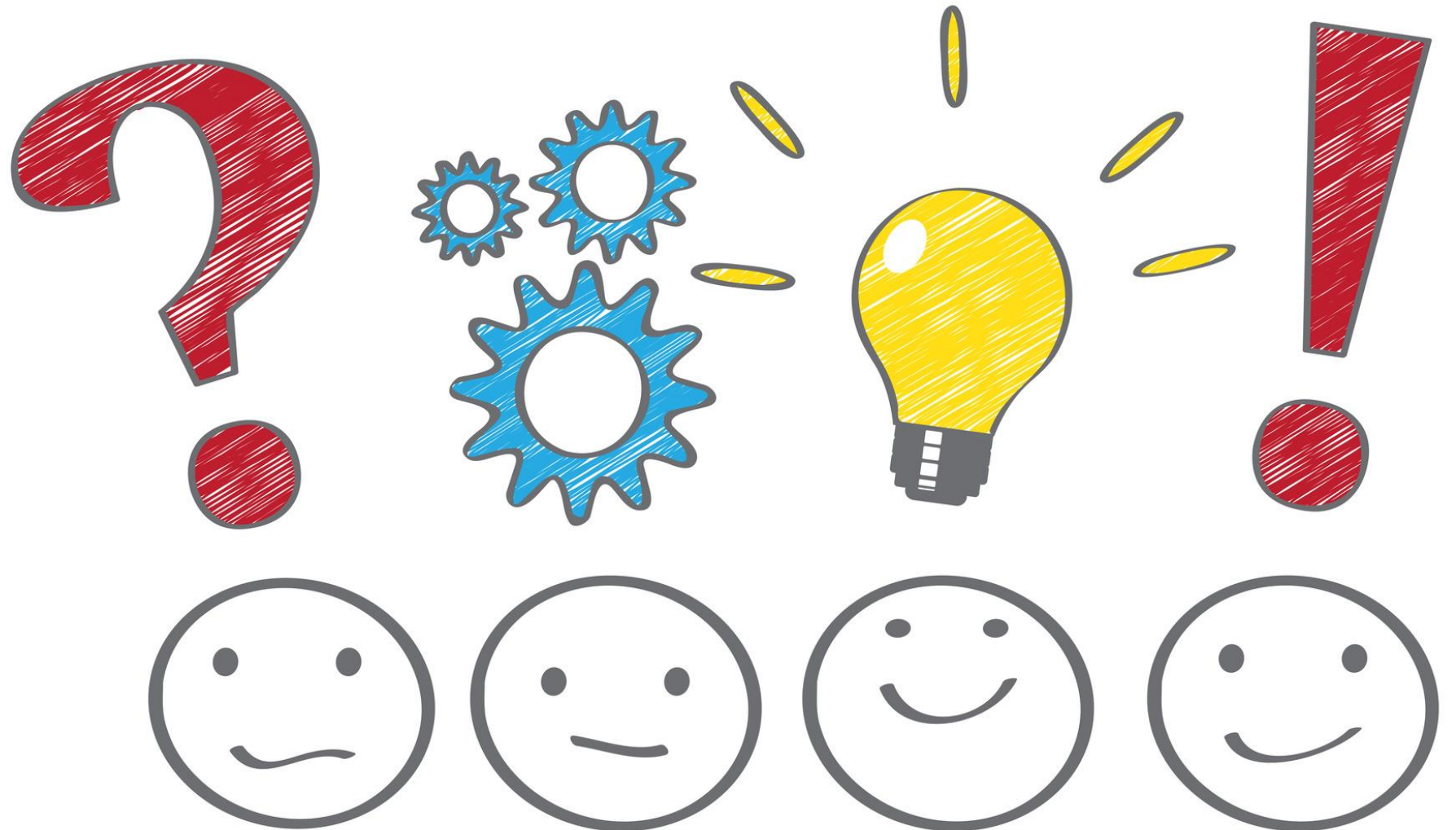
Trade Shop



Activate your online account at www.rya.org.uk/go/trade



Any questions?





Inland Waterways Instructor Conference 2018

ENVIRONMENTAL AWARENESS TRAINING FOR IW INSTRUCTORS



A joint environment initiative

Kate Fortnam, Campaign Manager
info@thegreenblue.org.uk

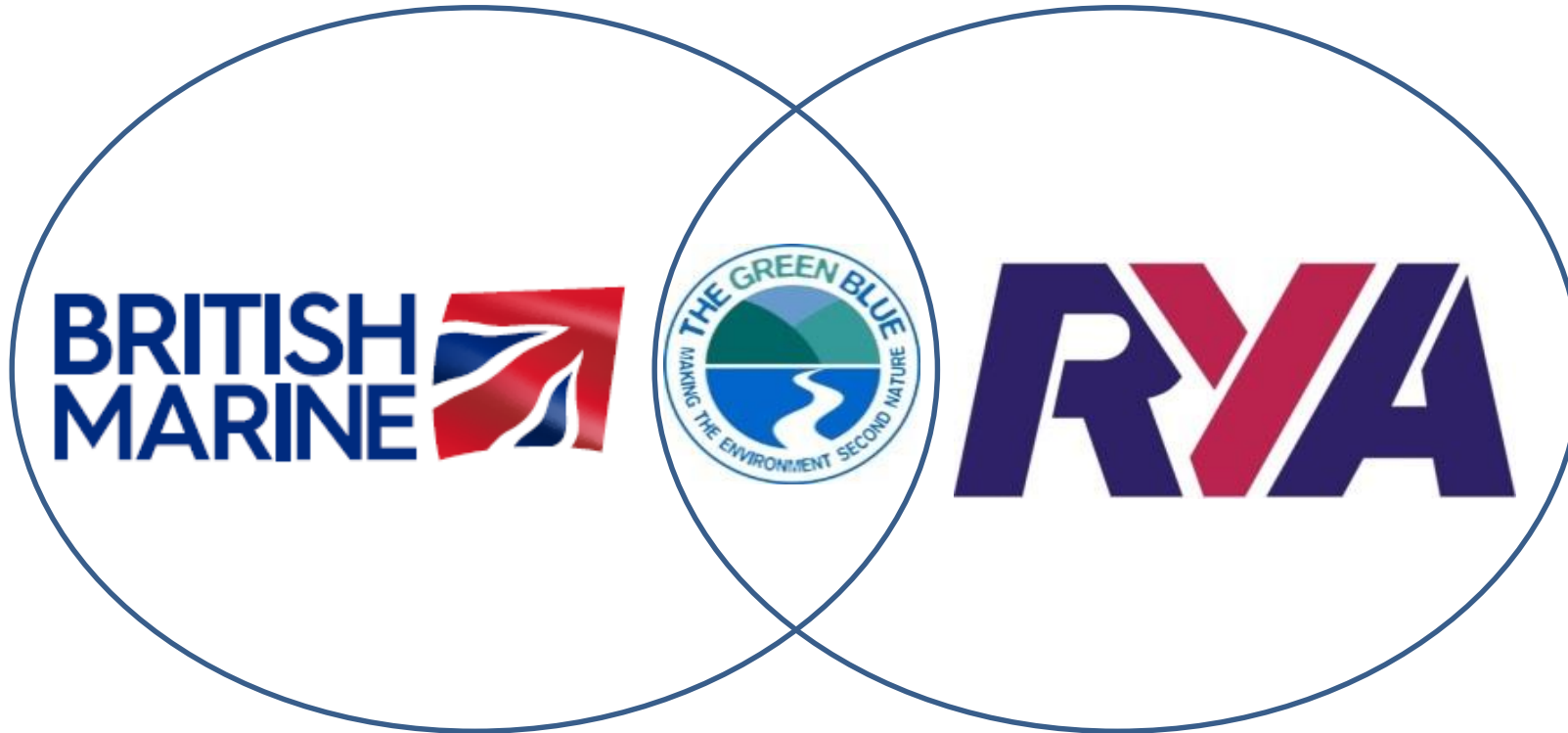
www.thegreenblue.org.uk

What are we going to cover?

- **Who is The Green Blue?**
- **What's the point?**
- **How can inland boating minimise it's environmental impacts?**
 - **Wildlife + habitat appreciation**
 - **Invasive Non-Native Species (INNS)**
 - **Using oil and fuel**
 - **Greywater**
- **Instructor Resources**



WHO IS THE GREEN BLUE?



Joint environmental initiative between RYA and British Marine since 2005.

To support the sustainable use of coastal and inland waters by the UK recreational boating sector for today and for future generations.



WHAT'S THE POINT?

We must demonstrate best practice to:

- Maintain our freedom of access
- Reduce red tape
- Safeguard inland waters we enjoy boating in and the wildlife + habitats we share it with.



RYA AIM:

Maintain and promote
safe, responsible
recreational boating

Enjoying Inland Waterways With Minimal Impact

ACTIVITY:

How could your craft cause impacts on our environment?

1. In pairs discuss 2 examples of how your inland boat could impact the environment.
2. Now share you're your 2 examples with another pair near you. Steal a new example!
3. Now discuss solutions to your 3 examples. Be prepared to share!



WILDLIFE + HABITAT BEST PRACTICE

1.	FIND OUT	<ul style="list-style-type: none">• What bye-laws and protected designated sites are in the areas you are boating?
2.	SLOW DOWN	<ul style="list-style-type: none">• Spot or approached by wildlife slow down to reduce risk of collision, noise and wash.
3.	DISTANCE	<ul style="list-style-type: none">• Avoid getting too close to wildlife and habitats where, noise, wash and presence can disturb.
4.	KEEP QUIET	<ul style="list-style-type: none">• Keep voices low• Turn down music
5.	KEEP WASH MINIMAL	<ul style="list-style-type: none">• Good boat handling skills will help to reduce unnecessary wash.



Invasive Non-Native Species – Don't let them hitch a ride!

WHAT ARE THEY?

- Aquatic or terrestrial
- Animal or plant
- Introduced/spread to an area outside it's natural range

IMPACTS?

- Environmental
- Economic
- Restricts navigation
- Damages equipment



Invasive Non-Native Species – Don't let them hitch a ride!



Help stop the spread.....

CHECK - for visible animal/plant matter on boat – remove it + bin it.

CLEAN - your boat and equipment with tap water whenever possible.

DRY - leave out to air dry equipment for as long as possible.

A narrowboat is moored on a canal, surrounded by lush green trees and a brick building in the background. The water reflects the surrounding foliage. The text 'NARROW BOATING ENVIRONMENTAL TOP TIPS' is overlaid on the image in large, bold, sans-serif font. 'NARROW BOATING' is in blue, 'ENVIRONMENTAL' is in white, and 'TOP TIPS' is in red.

NARROW BOATING ENVIRONMENTAL TOP TIPS

USING FUEL AND OIL

HOW CAN YOU HELP PREVENT SPILLS?

- Check your engine and lines regularly
- Keep **Oil Spill Kit** to hand
- Use a **Fuel Collar** – Capture fuel drips
- Use a **'SuperSpout'** – controls flow + has an air lock to stop overfilling.
- Install an **inline bilge filter**
- **Check your bilge** for oil/fuel before pumping out – avoid auto pump where possible.



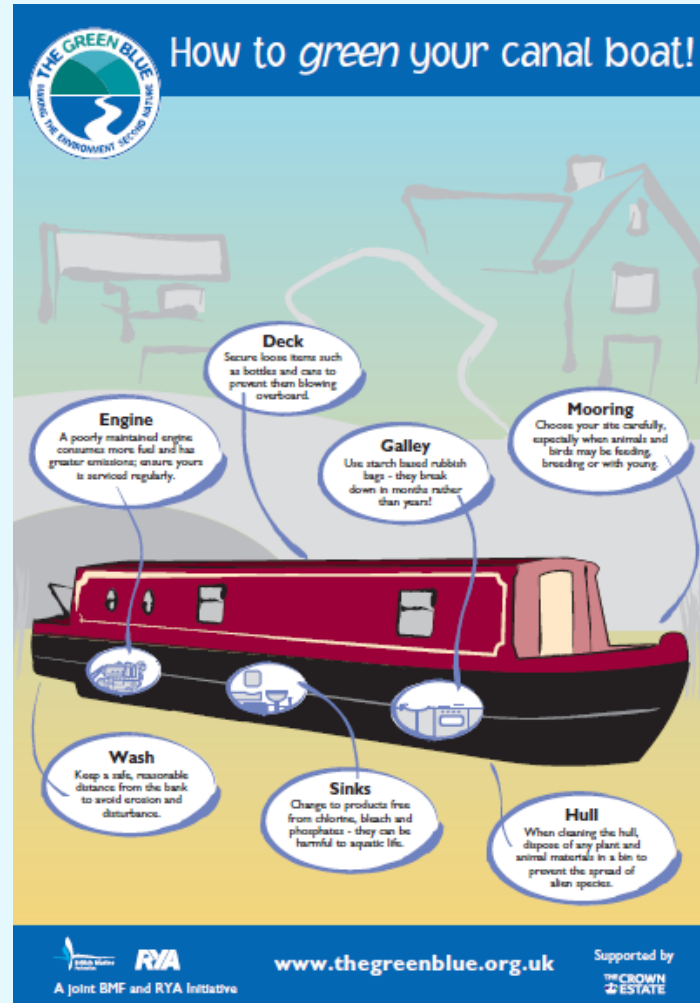
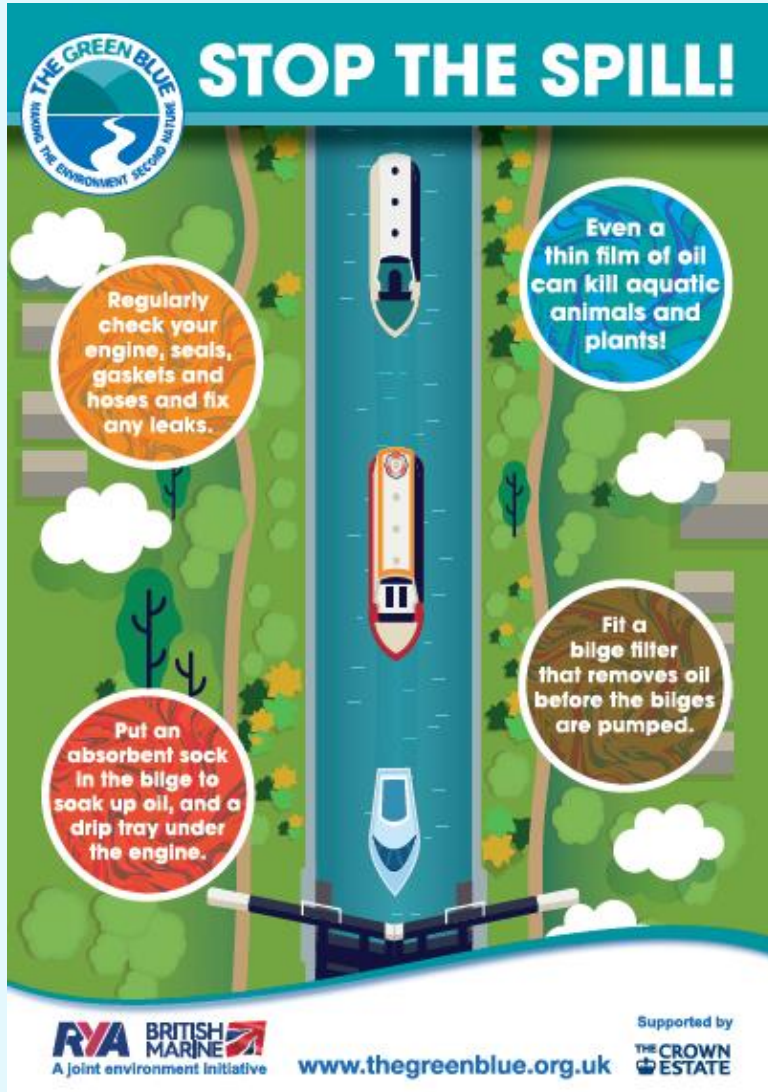
GREY WATER

- **Use Eco-Friendly products – Check the labels**
- Avoid products that contain bleach, chlorine and phosphate.
- Avoid protected areas + enclosed areas where there is limited water movement.



1

SUSTAINABLE BOATING GUIDES + POSTERS



info@thegreenblue.org.uk

2

ENVIRONMENT + BOATING QUIZ CARDS

- 5min fillers
- Quiz questions
- Builds Instructor knowledge
- Helps promote discussion
- Narrowboat and Motorboats courses



RYA Books app:
www.rya.org.uk/shop/



ENVIRONMENTAL AWARENESS IW INSTRUCTORS



A joint environment initiative

Kate Fortnam, Campaign Manager
info@thegreenblue.org.uk

www.thegreenblue.org.uk