

Sailing Instructions

The organising authority is Largs Sailing Club in conjunction with RYA Scotland.

1 RULES

The Regatta will be governed by the rules as defined in the Racing Rules of Sailing (RRS).

2 ELIGIBILITY

- 2.1 This regatta is open to boats or boards of the Optimist, Topper, Laser 4.7, Laser Radial, 420, 29er, Techno classes belonging to, or under the control of, members of clubs affiliated to the RYA.

3 ADVERTISING

- 3.1 Competitors may be required to display advertising chosen and supplied by the organising authority
3.2 Competitors may be required to wear bibs which the organising authority will supply.
3.3 Competitors may be required to carry a camera which the organising authority will supply.

4 NOTICES TO COMPETITORS

Notices to competitors will be posted on the official Regatta Notice board situated in the lower corridor of Largs SC.

5 CHANGES IN SAILING INSTRUCTIONS

Any change(s) to the sailing instructions will be posted not less than one hour before the first start on the day it will take effect, except that any change to the schedule of races will be posted by 20:00 on the day before it will take effect.

6 SIGNALS MADE ASHORE

- 6.1 Signals ashore will be displayed from the flagpole on the northwest corner of the Largs SC balcony.
6.2 When flag AP is displayed ashore, '1 minute' is replaced with 'not less than 20 minutes' in the race signal AP. This changes RRS Race Signal AP
6.3 Competitors shall not launch until the D flag is displayed

7 SCHEDULE OF RACES & CLASS FLAGS

The Competitor's briefing will take place at 10:30 on Sat 7 Dec 2019 in the Lookout Lounge situated upstairs in Largs SC.

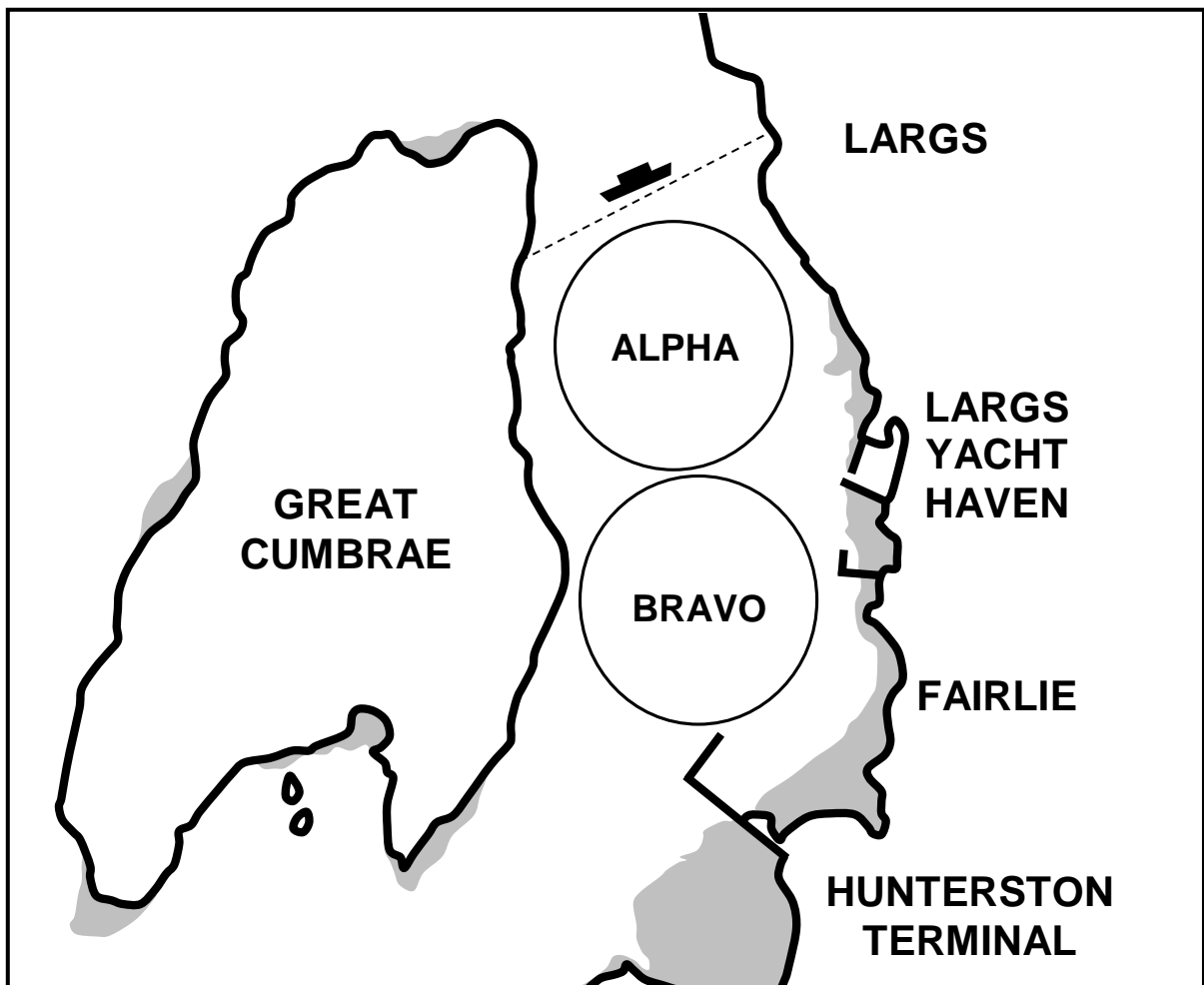
Date	Race Area	Class	Flag	Time of First Warning Signal	Number of Races
Sat 7 Dec	Alpha	Optimist	O	Not before 11:57	As many as conditions allow (max 100 per day)
		Topper	T		
		Laser	V		
	Bravo	Techno	G		
		420	J		
		29er	K		

Date	Race Area	Class	Flag	Time of First Warning Signal	Number of Races
Sun 8 Dec	Alpha	Optimist	O	Not before 10:27	As many as conditions allow (max 100 per day)
		Topper	T		
		Laser	V		
	Bravo	Techno	G		
		420	J		
		29er	K		

- 7.1 To alert boats that a race or sequence of races will begin soon, an orange flag will be displayed (with one sound) not less than 5 minutes before the first warning signals displayed.
- 7.2 No warning signal will be made after 15:00 on Sunday.

8 RACING AREAS

The racing areas will be in the Largs Channel, as shown in the diagram below:.



9 COURSES

- 9.1 The diagrams in Appendix 1 show the courses, including the order in which marks are to be passed and the side on which each mark is to be left. They do not accurately indicate the angle or distance between legs.
- 9.2 The course will be displayed on the committee vessel (black number on a white background).

10 MARKS

10.1 Marks 1, 1p/1s 2, 2p/2s 3 and 4 will be large yellow inflatable race marks.

11 THE START

11.1 The starting line will be between the mast displaying an orange flag on the Committee Vessel and a yellow column mark.

11.2 Races shall be started using the following signals. Times shall be taken from the visual signals; the absence of a sound signal shall be disregarded.

Minutes before starting signal	Visual signal	Sound signal	Means
3 min	Class flag	One	Warning signal
2 min	P, U or black flag	One	Preparatory signal
1 min	Preparatory removed	One long	One minute
Go	Class flag removed	One	Starting signal

This changes RRS 26

11.3 Boats whose preparatory signal has not been made shall keep clear of the starting area.

12 THE FINISH

12.1 The finishing line will be between the mast displaying an blue flag on a committee vessel and a yellow inflatable column mark.

12.2 In addition to the procedure for shortening course in RRS Rule 32, the race committee may also award a finishing score to a boat or board that is still racing by displaying to her from a committee vessel (which may be in motion) flag W with one sound signal. A boat or board so notified is no longer required to sail the course, shall stop racing and shall return to the starting area, or return ashore if there is no more racing. A finishing score under this sailing instruction will be the score she would have received had she sailed the course and finished within any time limit, without gaining or losing any place. The decision by the race committee to use this procedure or not to use it shall not be grounds for requesting redress. This changes RRS Rule 28.1 and RRS Rule 60.1(b).

13 TIME LIMITS

The time limit for each race will be 35 minutes after the start. Boats failing to finish within 10 minutes after the first boat in their class sails the course and finishes will be scored Did Not Finish. This changes RRS 35 and A4.

14 PROTESTS AND REQUESTS FOR REDRESS.

14.1 Protest forms are available at the Protest Committee desk upstairs in Largs SC. Protests shall be delivered there within the protest time limit.

14.2 The protest time limit is 60 minutes after the last boat has finished the last race of the day. The time limit will be posted on the Protest Committee Notice Board.

14.3 Notices will be posted within 30 minutes of the expiry of the protest time limit to inform competitors of hearings in which they are parties or named as witnesses. Hearings will be heard in the protest room located in Largs SC. Parties to each protest are requested to remain in the vicinity.

14.4 Notices of protests by the race committee will be posted to inform boats under RRS 61.1(b).

14.5 Protests will be heard as soon as possible, in approximately the order of receipt. It is the responsibility of the Protestor, Protestee and Witnesses to make themselves available for the hearing.

14.6 On the last day of the Regatta a request for reopening a hearing shall be delivered:

(a) within the protest time limit if the party requesting reopening was informed of the decision on the previous day;

- (b) no later than 30 minutes after the party requesting reopening was informed of the decision on that day.

This changes RRS Rule 66.

15 SCORING

15.1 One race is required to be completed to constitute a series.

- (a) When fewer than 5 races have been completed, a boat's series score will be the total of her race scores.
- (b) When 5 to 11 races have been completed, a boat's series score will be the total of her race scores excluding her worst score.
- (c) When 12 or more races have been completed, a boat's series score will be the total of her race scores excluding her two worst scores.

16 SAFETY REGULATIONS

16.1 Check-out and check-in.

- a) A tally system will be used during the regatta; the tallies will be numbered rubber wristbands which should be worn on each competitor's wrist. Individual tally numbers will be allocated at registration.
- b) To check-out tallies shall be collected from the tally board which will normally be positioned at the top of the launch ramp prior to going afloat. To check-in the tally should be returned to the tally board immediately on returning to shore after racing, but no later than the protest time limit.
- c) Competitors that fail to tally correctly may be protested by the race committee. The protest committee may impose a lesser penalty than DSQ for infringements of this SI, if the protest committee awards a points penalty it shall be applied to the first completed race on the day the infringement took place. This changes RRS 63.1.

16.2 Clydeport Operations Limited Restrictions.

NARROW CHANNELS. Attention is drawn to the International Regulations for the prevention of collisions at sea, 1972. Particular notice shall be taken of Rule 9b which states that "a vessel of less than 20m in length or a sailing vessel shall not impede the passage of a vessel which can safely navigate only within a narrow channel or fairway". Whilst racing or on a passage in the Firth of Clyde north of Cumbrae Head yachts must regard any such recommended channels as a "Narrow Channel" within the meaning of the IRPCS 9b.

Furthermore Clydeport Operations Limited has decreed that any waters in the Firth of Clyde where vessels by virtue of their size, draught, speed or proximity to land, hazards and other vessels are unable to manoeuvre freely must be regarded as a "Narrow Channel". Whilst racing any yacht which is unable for reasons of lack of wind or other cause, to sail clear of a large power driven vessel shall start her engine and/or paddle in order to clear and thereafter shall report full details to the Race Committee.

Competitors are reminded of the Clydeport Operations Limited Byelaw which prohibits yachts and other craft from maneuvering within 100m of any ferry terminal. Particular regard should be paid to this when in the vicinity of the Caledonian Macbrayne facilities at Largs and Cumbrae.

- 16.3 All competitors shall wear a personal flotation device at all times when afloat, except briefly when changing or adjusting clothing or personal equipment. Wet / dry suits are not considered personal flotation devices. This changes RRS Rule 40.
- 16.4 Boats that breach Sailing Instructions 16.1 and 16.2 may be subject to a protest by the Race Committee only. The Protest Committee may impose a lesser penalty than DSQ, if the protest committee awards a points penalty it shall be applied to the first completed race on the day the infringement took place. This changes RRS 63.1.

17 PRIZES

The prize giving will be held in Largs Sailing Club as soon as possible after racing ends on Sunday afternoon. Prizes will be awarded to the first three boats in each class if sufficient numbers participate.

18 RISK STATEMENT

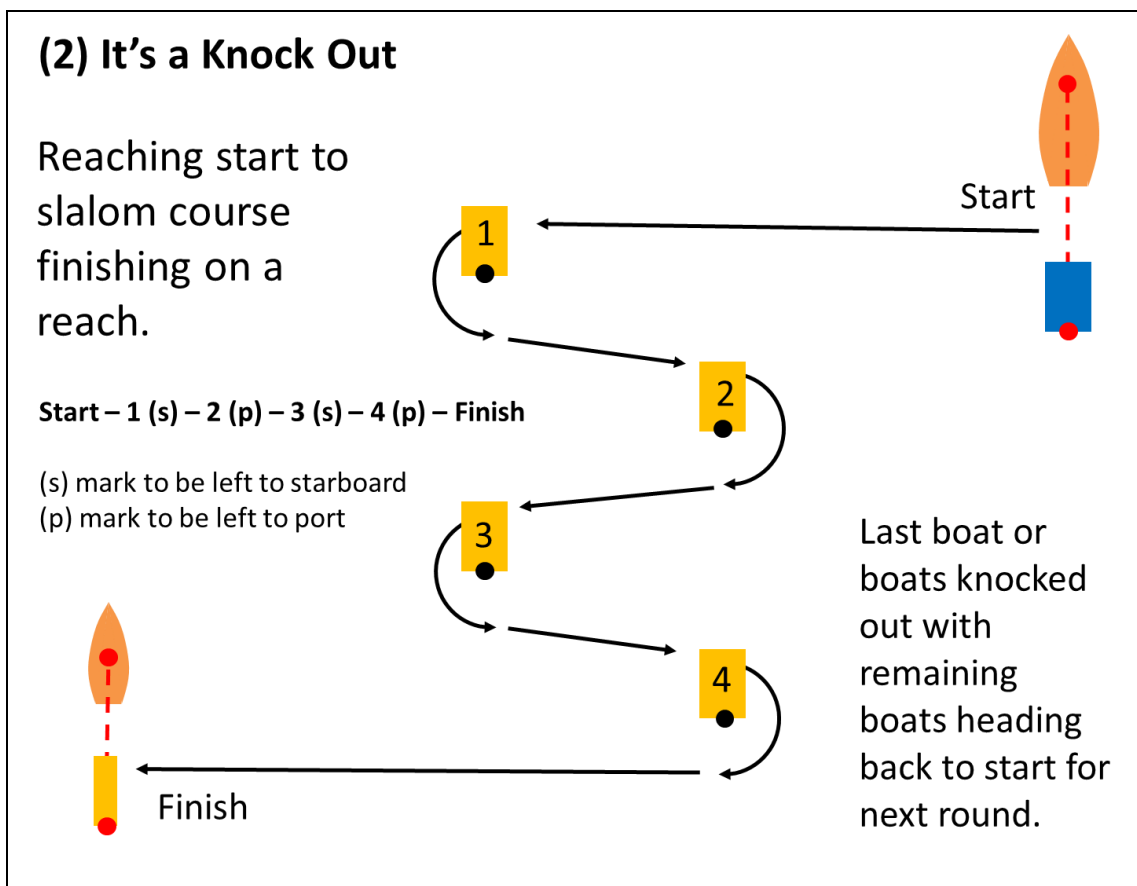
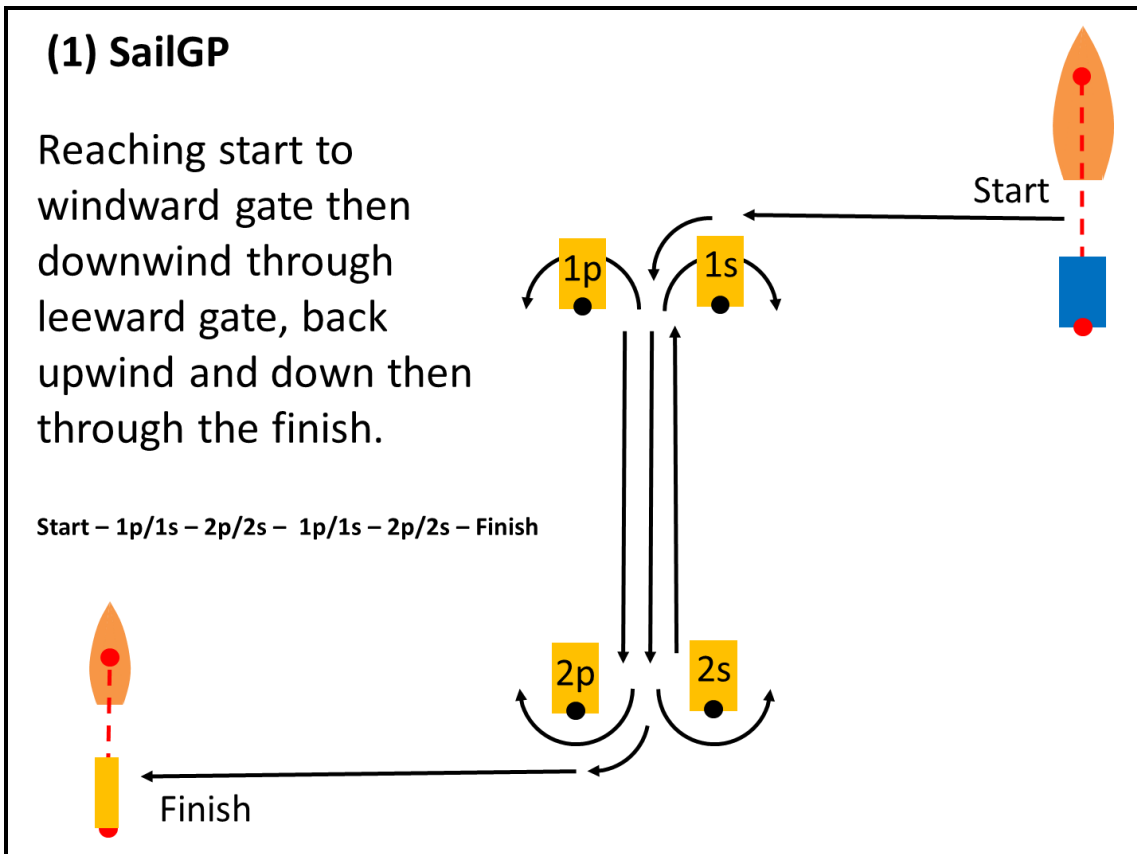
18.1 Rule 4 of the Racing Rules of Sailing states: "The responsibility for a boat's decision to participate in a race or to continue racing is hers alone."

18.2 Sailing is by its nature an unpredictable sport and therefore inherently involves an element of risk. By taking part in the event, each competitor agrees and acknowledges that:

- (a) They are aware of the inherent element of risk involved in the sport and accept responsibility for the exposure of themselves, their crew and their boat to such inherent risk whilst taking part in the event;
- (b) They are responsible for the safety of themselves, their crew, their boat and their other property whether afloat or ashore;
- (c) They accept responsibility for any injury, damage or loss to the extent caused by their own actions or omissions;
- (d) Their boat is in good order, equipped to sail in the event and they are fit to participate;
- (e) The provision of a race management team, patrol boats and other officials and volunteers by the event organiser does not relieve them of their own responsibilities;
- (f) The provision of patrol boat cover is limited to such assistance, particularly in extreme weather conditions, as can be practically provided in the circumstances.
- (g) It is their responsibility to familiarise themselves with any risks specific to this venue or this event drawn to their attention in any rules and information produced for the venue or event and to attend any safety briefing held for the event.

19 INSURANCE

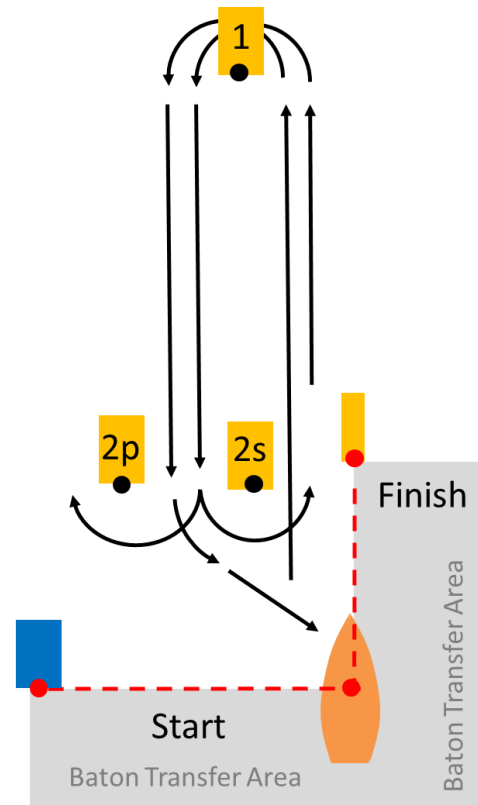
Each participating boat shall be insured with valid third-party liability insurance with a minimum cover of £3,000,000 per event or the equivalent.



(3) Pass the Baton

Two laps of a conventional windward-leeward course then passing the baton to next boat. Baton must be trasfered after the finish and before the next boat starts.

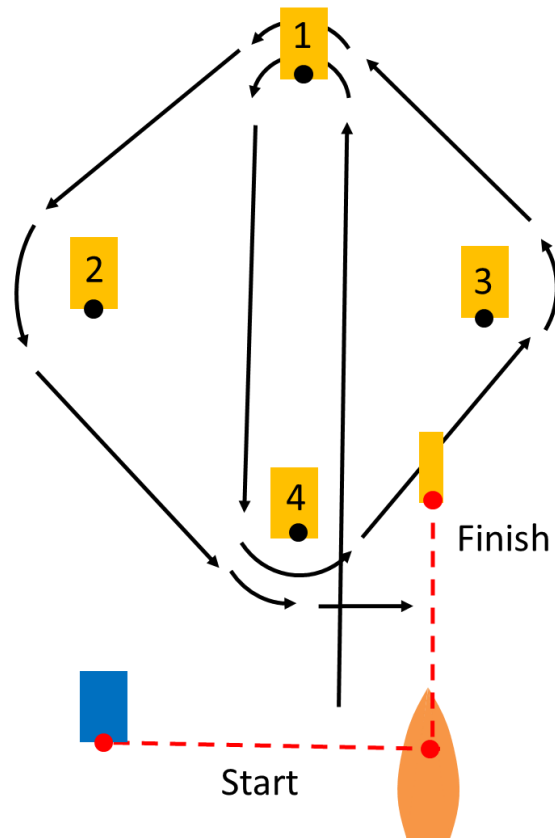
Start – 1 – 2p/2s – 1 – 2p/2s – Finish



(4) Diamonds Are Forever

Windward-leeward then a diamond to emphasis tactics around mark room

Start – 1 – 4 – 3 – 1 – 2 – 4 – Finish

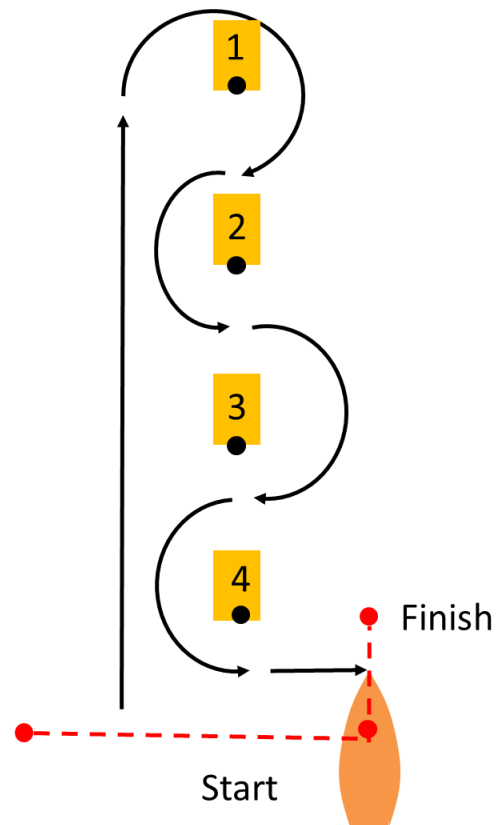


(5) Slalom Course

Conventional windward leg followed by a slalom back down to the finish.

Start – 1 (s) – 2 (p) – 3 (s) – 4 (p) – Finish

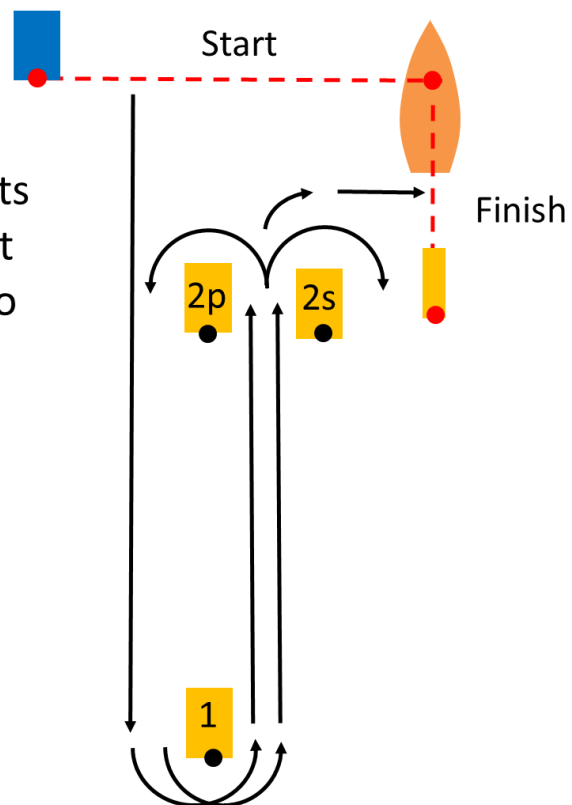
(s) Denotes mark to be left to starboard
(p) Denotes mark to be left to port



(6) Upside Down Race

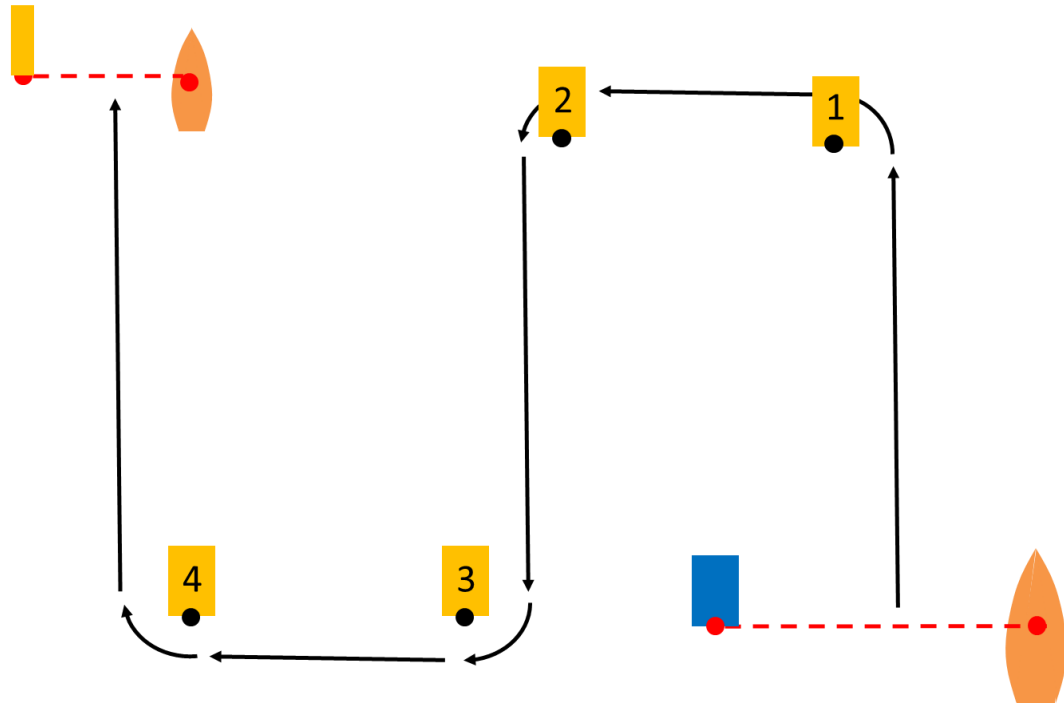
A conventional windward – leeward course flipped on its head with a downwind start and downwind first leg. Two laps and through the finish line.

Start – 1 – 2p/2s – 1 – 2p/2s – Finish



(7) Sprint Course

(S) Start – 1 (p) – 2 (p) – 3 (s) – 4 (s) – Finish
 (s) Denotes mark to be left to starboard and (p) to port



(L#) Windward-Leeward Course

Windward-leeward course with finish off front of committee boat

L4

Start – 1 – 2p/2s – 1 – 2p/2s – 1 – 2p/2s – 1 – 2p/2s – Finish

L3

Start – 1 – 2p/2s – 1 – 2p/2s – 1 – 2p/2s – Finish

L2

Start – 1 – 2p/2s – 1 – 2p/2s – Finish

L1

Start – 1 – 2p/2s – Finish

