

\_\_\_\_\_

Risk Assessment For **BYS Regional Junoir Championships 2020** Event

Prepared by **Duncan West** Date **23/09/2020**

Types of Boat **Bic Techno** Number expected **18**

Event dates **26-27/9/20**

Location **ASWC Portsmouth** Coastal/Inland **Coastal**

Junior/Youth/Adult **Junior** Beginner/Intermediate/Advanced **Int/Adv**

Number of Courses **Training and Racing**

Number of Support Boats **3 coach ribs** Number of Motherships **None**

Times of High water \_\_\_\_\_

**Definitions**

**Likelihood** Low Unlikely to occur  
 Medium Likely to occur subject to wind and sea conditions  
 High Almost certain to occur

**Impact** Low Little or no effect  
 Medium Possible damage or injury or effect on wellbeing  
 High Significant effect on sailing or damage to personel or equipment

		Impact		
		Low	Medium	High
Likelihood	High	M	H	VH
	Medium	L	M	H
	Low	L	L	M

- Risk level** Further action required
- L Low Risk consider improvements if low cost or easy to implement.
  - M Further control measures should be considered.
  - H Further control measures must be introduced.
  - VH Unacceptable, Further control measures must be introduced.



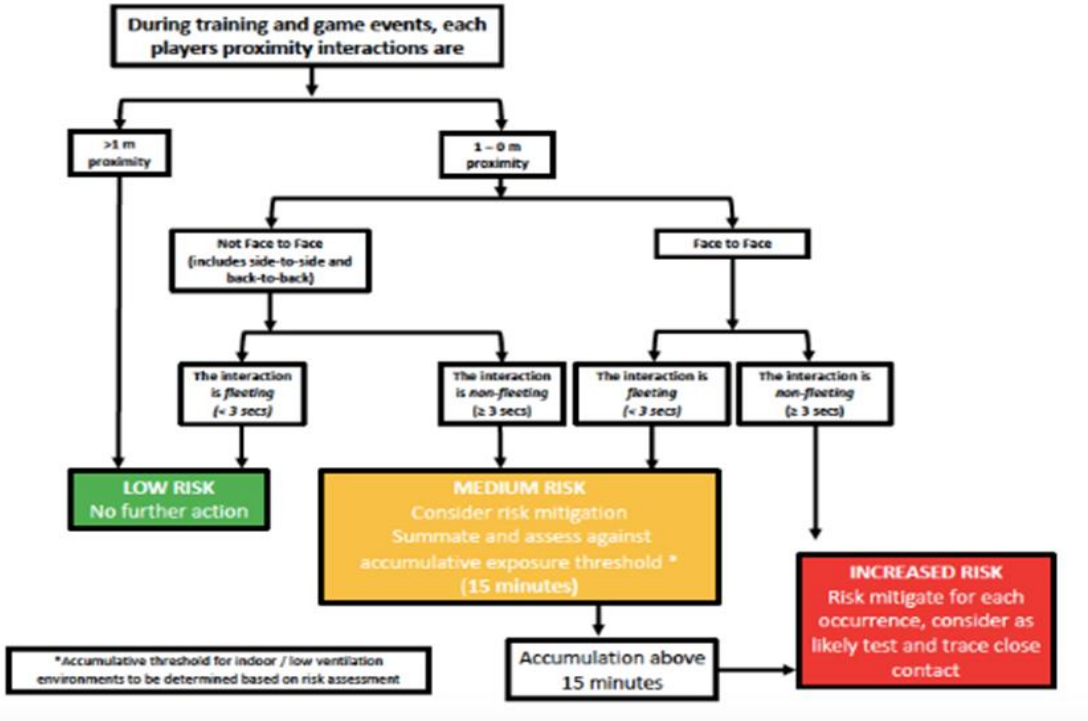
**Event Risk Assessment  
Risks Associated with COVID - Shoreside**

<b>Event Name</b>	BYS Regional Junoir Championships 2020	<b>Prepared by</b>	Duncan West
<b>Event Dates</b>	26-27/9/20	<b>Date</b>	23/09/2020

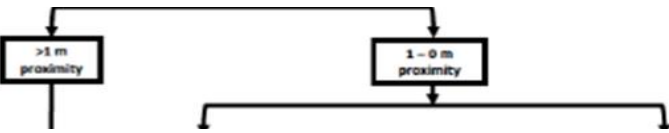
ID	Activity	Proximity before counter measures	Face to face?	Interaction Time	Risk Level before counter measures	Accumulative time (if medium risk)	Cumulative Risk Level	Additional Mitigations Required	Final Risk Level
<b>NODE 1 - RACE OFFICE</b>									
1	N/A								
2									
3									
<b>NODE 2 - BOATPARK</b>									
4	Rigging	>1m	No	Non-fleeting	Medium	<15 mins	Medium	all sailors reminded to keep apart when rigging, do not touch other sailors kit.	Low
5	Coach Sailor Briefings	>1m	No	Non-fleeting	Medium	<15 mins	Medium	1. Sailors given quick shore side briefings, in small groups, with each sailor given a space to sit. 2. keep briefings short and talk to individuals on the water or ashore where possible	Low

ID	Activity	Proximity before counter measures	Face to face?	Interaction Time	Risk Level before counter measures	Accumulative time (if medium risk)	Cumulative Risk Level	Additional Mitigations Required	Final Risk Level
6	Spectator parents	>1m	no	Non-fleeting	Medium	>15 mins	High	1. Parents reminded of their responsibility to not to congregate in groups large than 6 and at all times keep 1m+ in force and where possible 2m	Medium
7									
8									
<b>NODE 3 - COMPETITOR, SUPPORT PERSON, &amp; EVENT STAFF WELFARE</b>									
<b>NODE 4 - EQUIPMENT INSPECTION</b>									
	N/A								
<b>NODE 5 - PROTEST HEARINGS</b>									
	N/A								

Notes
Coach's to help remind sailors and parents
Coach to enforce



Notes
This is the responsibility of parents but WPNSA and RYA staff will remind parents if needed



**Event Risk Assessment  
Risks Associated with COVID - Waterside**

<b>Event Name</b>	BYS Regional Junoir Championships 2020	<b>Prepared by</b>	
<b>Event Dates</b>	26-27/9/20	<b>Date</b>	

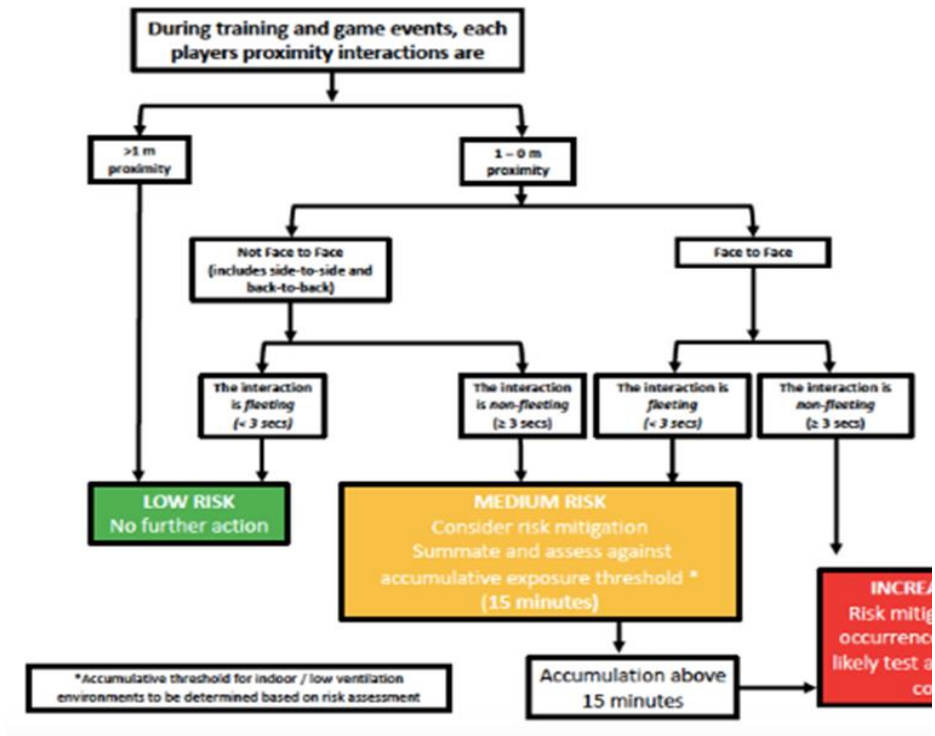
ID	Activity	Proximity before counter measures	Face to face?	Interaction Time	Risk Level before counter measures	Accumulative time (if medium risk)	Cumulative Risk Level	Additional Mitigations Required
<b>NODE 1 - Windsurfer CLASSES</b>								
1	Launch	<1m	No	Non-fleeting	Medium	<15 mins	Medium	1. Launch in batches to limit overcrowding of ramp 2. Mark out dedicated lanes on slipway
2	Sailing to course area	>1m	No	N/A	Low	n/a	Low	None
3	Racing	>1m	No	N/A	Low	n/a	Low	None

ID	Activity	Proximity before counter measures	Face to face?	Interaction Time	Risk Level before counter measures	Accumulative time (if medium risk)	Cumulative Risk Level	Additional Mitigations Required
4	Coaching	>1m	Yes	Non-fleeting	Medium	<15 mins	Medium	1. Keep coaching conversation to a short lenth. 2.raduce sailor / coach coactact by sailor staying on board and not entering your rib.
<b>NODE 2 - DOUBLEHANDED CLASSES</b>								
<b>NODE 3 - RIBs i.e. Coaches</b>								
9	Normal operation Coaches working one up	<1m	No	Non-fleeting	Medium	>15 mins	High	1. For RYA VSRs max 3 POB. Intention to work one up, 3. Maintain min 1m separation 4. Frequent hand cleansing 5. Wipe down of touch points & VHF after use
10	Mark Laying	>1m	No	N/A	Low	N/A	Low	None
11	Safety Boat / Mark layers contamination from different crew different days	touch points	No	N/A	Low	N/A	Low	all RYA / OA supplied ribs will be cleaned before use and each nigh reedy for next crew to use
12	Rescue of person in water	<1m	No	Non-fleeting	Medium	<15 mins	Medium	1. Wear face covering & gloves when recovering casualty 2. Ensure casualty is facing away from safety boat 3. If able casualty to self rescue using strop or ladder 4. If casualty conscious and able they should wear face covering once aboard safety boat
<b>NODE 4 - COMMITTEE BOATS</b>								



ID	Activity	Proximity before counter measures	Face to face?	Interaction Time	Risk Level before counter measures	Accumulative time (if medium risk)	Cumulative Risk Level	Additional Mitigations Required
<b>NODE 5 - Beach Crew</b>								
17	Launch/ recovery will have parents ashore	<1m	No	Non-fleeting	Medium	<15 mins	Medium	Only parent support sailors launch recovery. All briefed regards social distancing on slip way.
20								

Duncan West	
23/09/2020	
Final Risk Level	Notes
Low	<ol style="list-style-type: none"> <li>Determine appropriate size of batches</li> <li>liaise with ASWC re marking</li> <li>Ensure pre-event information makes it clear we won't provide helpers</li> </ol>
Low	
Low	



Final Risk Level	Notes
Medium	
Low	<ul style="list-style-type: none"> <li>1. CO to assess non RYA RIBs for capacity</li> <li>2. EO to maximise use of same household crews</li> <li>4. CO to ensure provision of hand sanitiser onboard</li> <li>5. CO to ensure provision of anti-bac wipes and suitable disposal method onboard</li> </ul>
Low	cleaning equipment brought
Low	cleaning equipment brought
Medium	<ul style="list-style-type: none"> <li>1. CO to ensure face coverings and gloves provided to RIB crews</li> <li>3. CO to ensure suitable equipment onboard RIBs</li> <li>4. CO to ensure RIBs carry spare face coverings for use by casualties</li> </ul>



Final Risk Level	Notes
Low	



**BASED RISK**  
gate for each  
e, consider as  
and trace close  
contact





**Event Risk Assessment  
Risks Associated with Sailing**

<b>Event Name</b>	BYS Regional Junoir Championships 2020	<b>Prepared by</b>	Duncan West
<b>Event Dates</b>	26-27/9/20	<b>Date</b>	23/09/2020

ID	Possible Hazard	Danger before counter measures	Impact of Risk before counter measures	Likelihood of occurrence before counter measures	Primary Countermeasures	Impact after counter measures	Likelihood after counter measures	Risk Level after counter measures	Notes
1	Capsize resulting in the crew being visible but in the water	Drowning Hypothermia	medium	High	Personal Flotation Devices should be worn at all times Wetsuits or drysuits should be worn when the water temperature is low with a note to competitors published prior to the event. The Safety Plan should ensure that a safety boat can reach a capsized dinghy quickly.	Medium	High	Medium	
2	Sinking resulting in the dinghy capsizing	Crew in the water for an extended period and the loss of the dinghy	Low	Low	Proof of Buoyancy Testing if applicable. Ability to have Prelaunch inspections if necessary	low	low	Low	Depends on the classes to race. No reported sinkings of any of the classes
3	Capsize resulting in the crew becoming trapped under the board or rig	Drowning	high	low	Coach ratio is 1:6. working in a contained area. Windsurfer are light and few entrapment issues	high	low	medium	Depends on classes racing.



ID	Possible Hazard	Danger before counter measures	Impact of Risk before counter measures	Likelihood of occurrence before counter measures	Primary Countermeasures	Impact after counter measures	Likelihood after counter measures	Risk Level after counter measures	Notes
4	Incident leading to an injury to the crew	Cuts, fractures, head injuries or similar	low	low	Safety Plan requiring first aid kits in all safety boats and sufficient qualified first aiders. Contingency Plan to deal with serious injuries. Agreed casualty drop off points.	low	low	Low	
5	Collision with other vessels, marks, buoys	Damage to other vessels and the dinghy. Injuries to any party	medium	low	RRS apply between racing boats. IRPCS apply to all other craft. Safety Plan to minimise racing in congested areas. Tactical Positioning to focus safety boats in expected areas of interaction. Daily safety briefing to take into account commercial traffic within race areas. SOP around turning off engines around competitors in the water.	medium	low	Low	windsurfer can stop quickly

<b>Node</b>	<b>ID</b>
Sailing	1
Sailing	1
Sailing	1
Location	2

Action
water temp in Portsmouth Harbour in September is high, beach team / coaches to look out for inappropriately dressed sailors
Lewis to complete a WPNSA risk assessment daily
Lewis to obtain UpToDate daily forecast
Venue to ensure slipway is clean and free of weed prior to event.

<b>Responsible</b>	<b>By</b>	<b>Complete?</b>
Lewis May		
Lewis May		
Lewis May		
WPNSA		